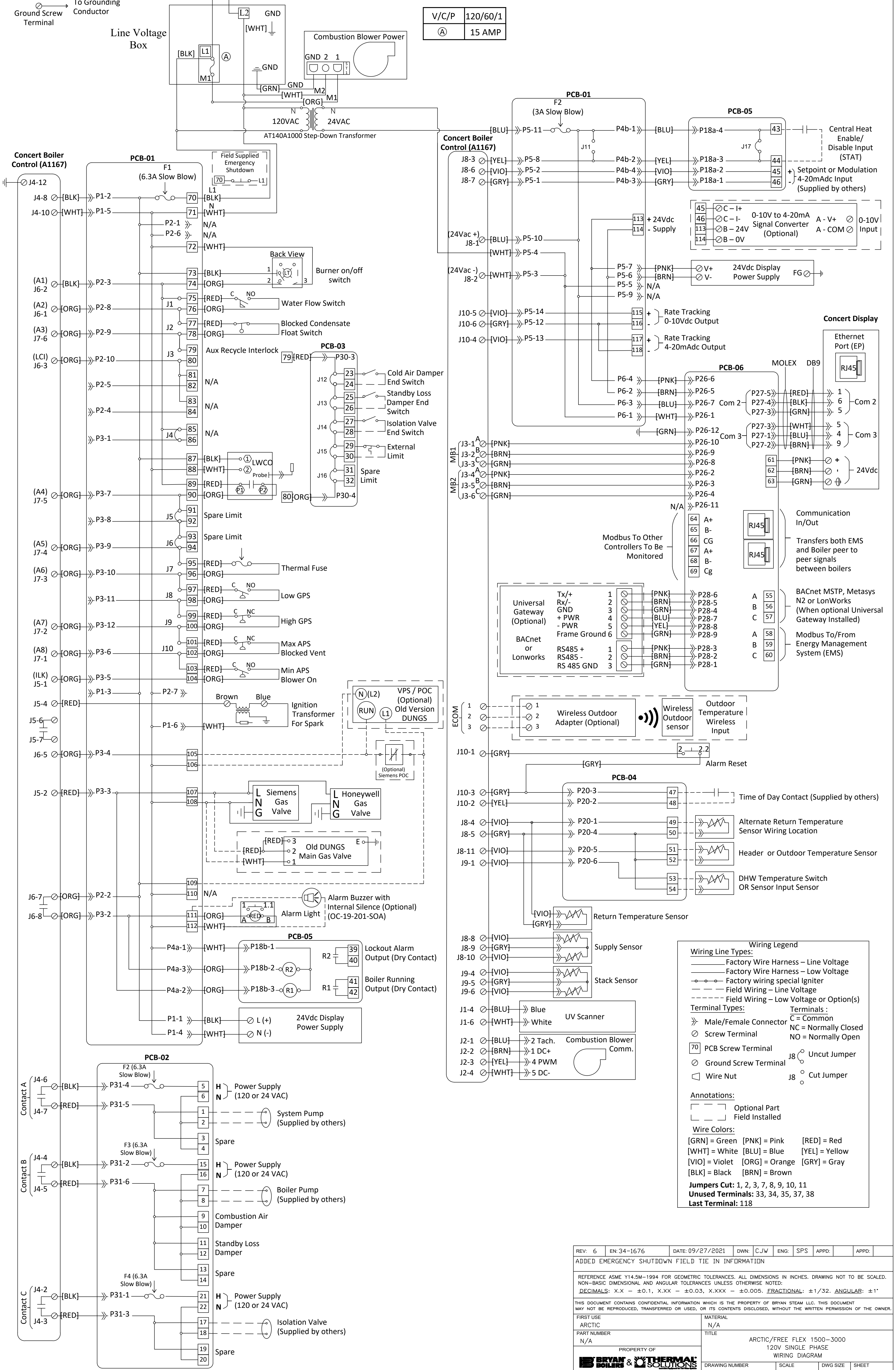


Boiler must be grounded in accordance with ANSI National Electric Code.

Connect to V/C/P Power Supply

IMPORTANT: The wiring shown for devices supplied and installed by others is suggested only. Certification of, and responsibility for the correctness of the wiring is the responsibility of the supplier of these devices. Bryan Steam LLC accepts no responsibility for the correctness or safety or execution of this wiring or of the operation of such devices.



V/C/P	120/60/1
(A)	15 AMP

Wiring Legend

Wiring Line Types:
 — Factory Wire Harness – Line Voltage
 — Factory Wire Harness – Low Voltage
 - - - Factory wiring special Igniter
 - - - Field Wiring – Line Voltage
 - - - Field Wiring – Low Voltage or Option(s)

Terminal Types:
 C = Common
 SC = Screw Terminal
 NC = Normally Closed
 NO = Normally Open

Annotations:
 [] Optional Part
 [] Field Installed

Wire Colors:
 [GRN] = Green [PNK] = Pink [RED] = Red
 [WHT] = White [BLU] = Blue [YEL] = Yellow
 [VIO] = Violet [ORG] = Orange [GRY] = Gray
 [BLK] = Black [BRN] = Brown

Jumpers Cut: 1, 2, 3, 7, 8, 9, 10, 11
Unused Terminals: 33, 34, 35, 37, 38
Last Terminal: 118

REV: 6	EN: 34-1676	DATE: 09/27/2021	DWN: CJW	ENG: SPS	APPD:	APPD:
ADDED EMERGENCY SHUTDOWN FIELD TIE IN INFORMATION						
REFERENCE ASME Y14.5M-1994 FOR GEOMETRIC TOLERANCES. ALL DIMENSIONS IN INCHES. DRAWING NOT TO BE SCALED. NON-BASIC DIMENSIONAL AND ANGULAR TOLERANCES UNLESS OTHERWISE NOTED: DECIMALS: X.X - ±0.1, X.XX - ±0.03, X.XXX - ±0.005. FRACTIONAL: ±1/32. ANGULAR: ±1°						
THIS DOCUMENT CONTAINS CONFIDENTIAL INFORMATION WHICH IS THE PROPERTY OF BRYAN STEAM LLC. THIS DOCUMENT MAY NOT BE REPRODUCED, TRANSFERRED OR USED, OR ITS CONTENTS DISCLOSED, WITHOUT THE WRITTEN PERMISSION OF THE OWNER.						
FIRST USE ARCTIC	MATERIAL N/A	PROPERTY OF BRYAN STEAM LLC				
PART NUMBER N/A	TITLE ARCTIC/FREE FLEX 1500-3000 120V SINGLE PHASE WIRING DIAGRAM	DRAWING NUMBER WD-874	SCALE NONE	DWG SIZE D	SHEET 1 OF 1	